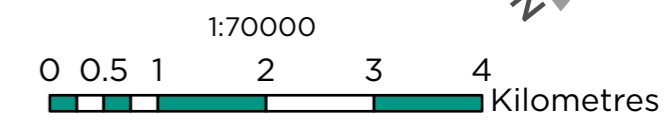


- ⊙ Urban Centres
- ⊙ Town Centres
- ▬ Primary Urban Boulevards
- ▬ Secondary Urban Boulevards
- ▬ Corridors
- ⋯ Planned Corridors
- ▬ City-wide Rapid Transit
- + Regional Rail (GO Train)
- ▭ Employment
- ▭ Neighbourhoods
- ▭ Natural Heritage System

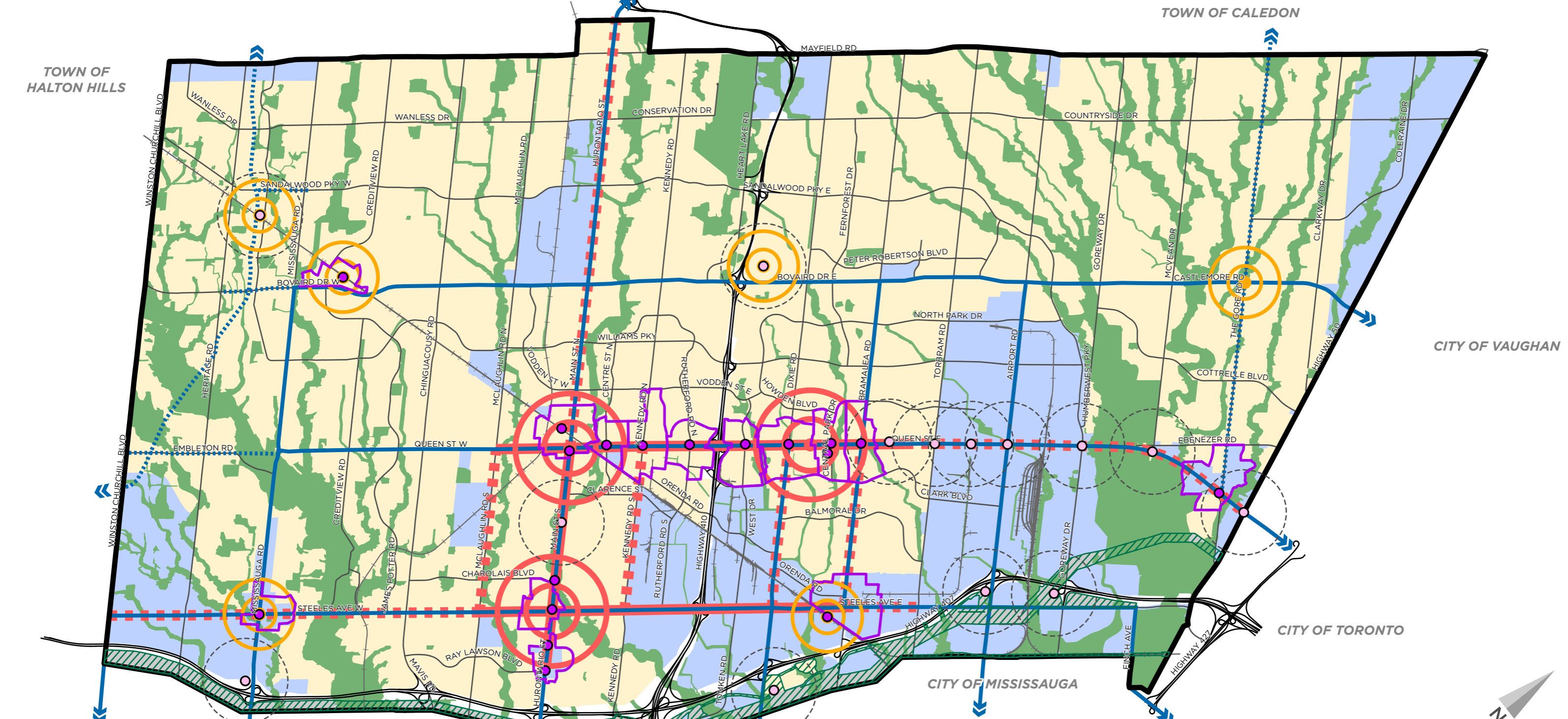
Base Map Features

- Railway
- Highway
- Major Streets
- ▨ Parkway Belt West



Date: April 2022
 Planning, Building and Economic Development
 Brampton Plan

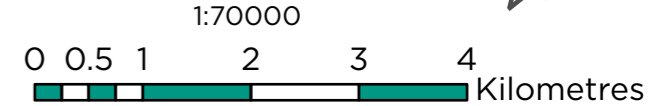
This map forms part of the Official Plan of the City of Brampton and must be read in conjunction with the text, other schedules and secondary plans. The boundaries and alignments of designations and overlays on this schedule are approximate and are not intended to be scaled.



- Urban Centres
- Town Centres
- Primary Urban Boulevards
- Secondary Urban Boulevards
- Corridors
- Planned Corridors
- Primary Major Transit Station Areas
- Planned Major Transit Station Areas

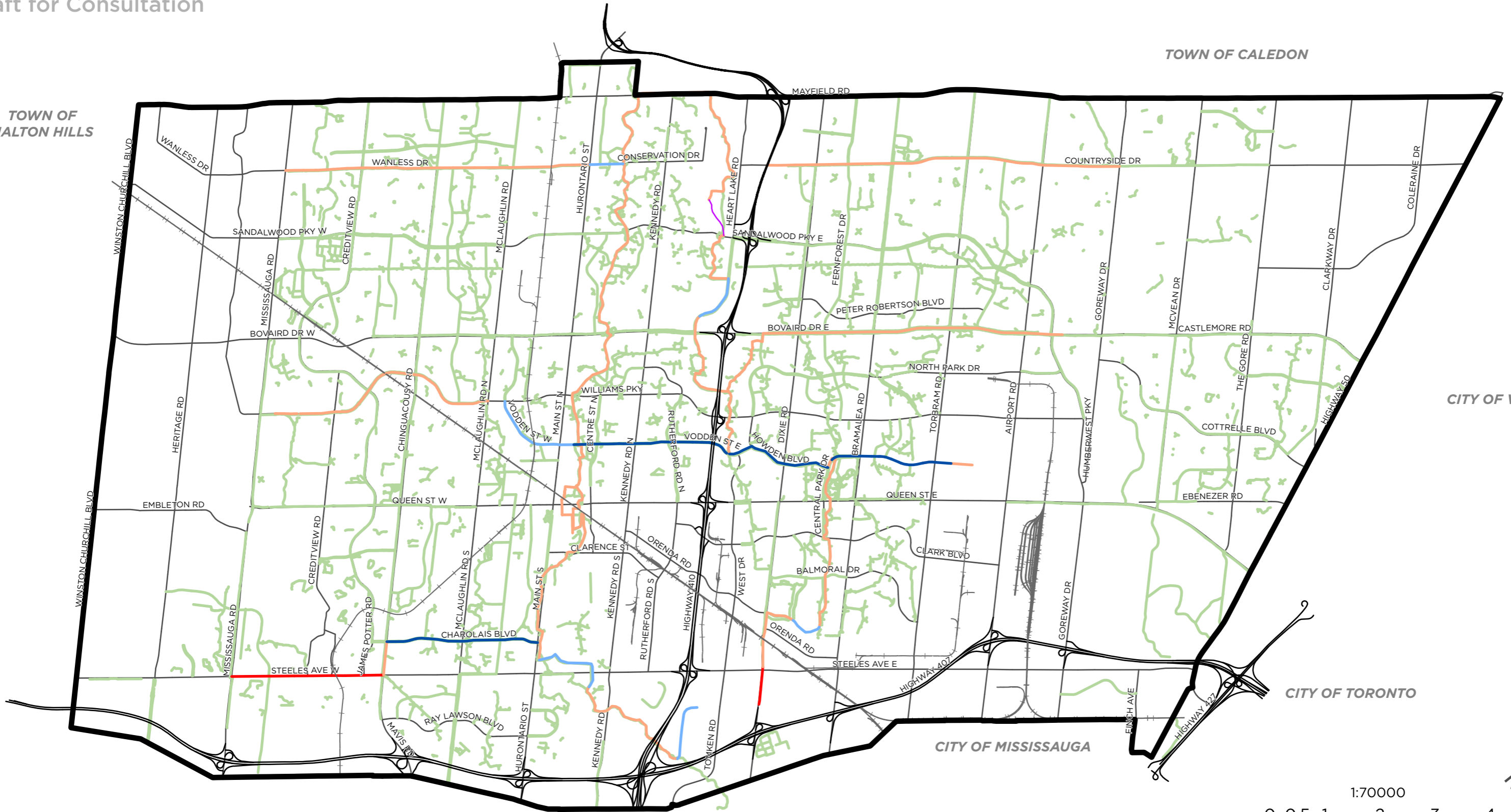
- Employment
- Neighbourhoods
- Natural Heritage System

- Base Map Features**
- Railway
 - Major Streets
 - Highway
 - Parkway Belt West



Date: April 2022
 Planning, Building and Economic Development
 Brampton Plan

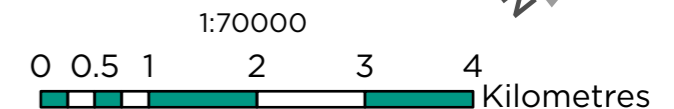
This map forms part of the Official Plan of the City of Brampton and must be read in conjunction with the text, other schedules and secondary plans. The boundaries and alignments of designations and overlays on this schedule are approximate and are not intended to be scaled.



- Protected Bike Lane or Cycle Track
- Bike Lane or Buffered Bike Lane
- Regional Connection
- Existing Network Link
- Multi Use Path
- Recreational Trail

Base Map Features

- Railway
- Highway
- Major Streets

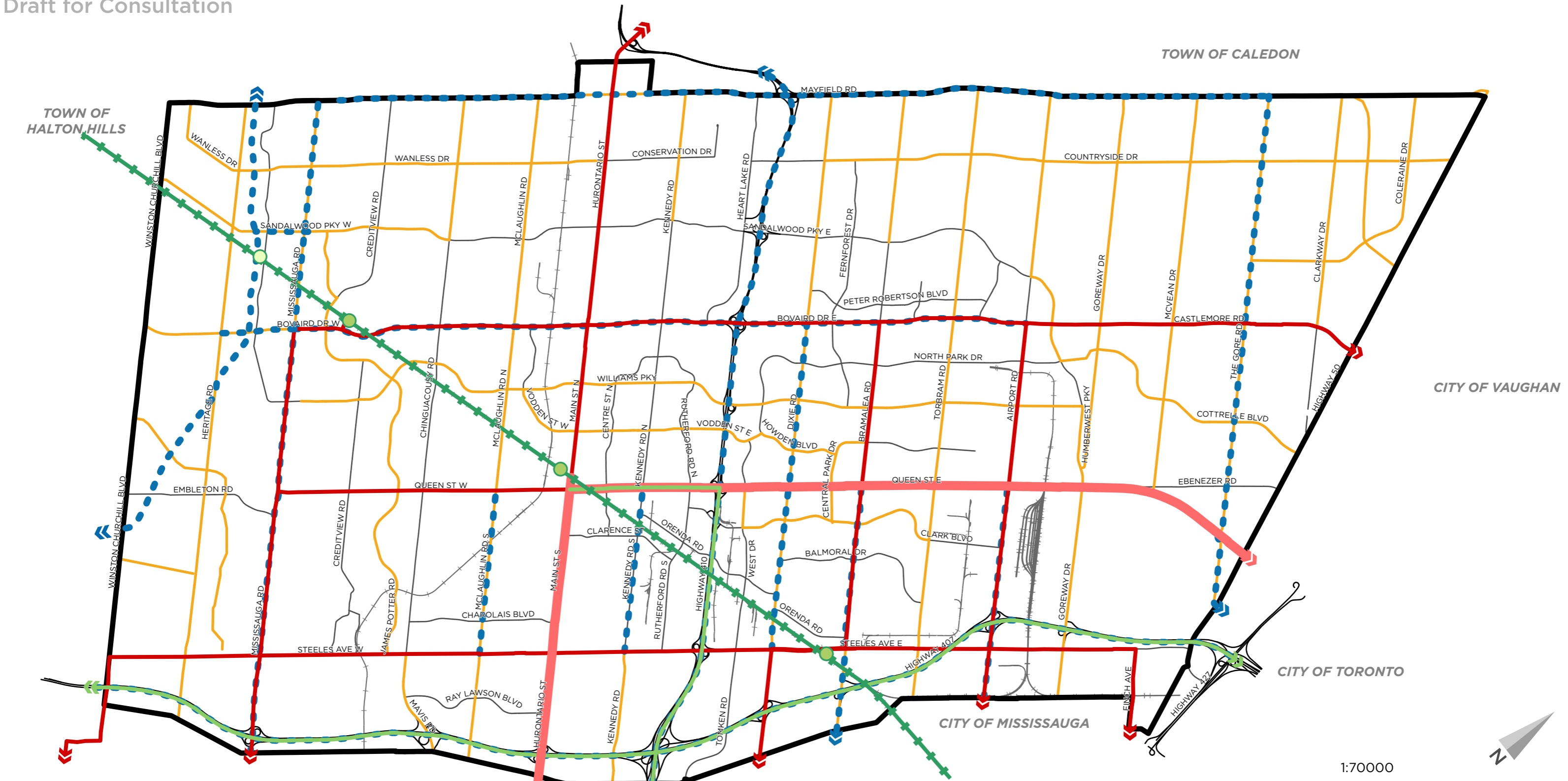


Date: April 2022
 Planning, Building and Economic Development
 Brampton Plan

This map forms part of the Official Plan of the City of Brampton and must be read in conjunction with the text, other schedules and secondary plans. The boundaries and alignments of designations and overlays on this schedule are approximate and are not intended to be scaled.

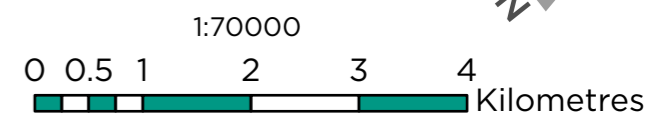
SCHEDULE 3A | ACTIVE TRANSPORTATION NETWORK





- + Regional Rail (GO Train)
- Higher Order Transit
- Frequent Transit
- - - Future Rapid Transit Routes
- Regional Bus
- Support Corridor
- Future GO Train Station
- GO Train Station

- Base Map Features**
- Railway
 - Highway
 - Major Streets



Date: April 2022
 Planning, Building and Economic Development
 Brampton Plan

This map forms part of the Official Plan of the City of Brampton and must be read in conjunction with the text, other schedules and secondary plans. The boundaries and alignments of designations and overlays on this schedule are approximate and are not intended to be scaled.

TOWN OF HALTON HILLS

Streets network subject to further refinement through Precinct Planning

CITY OF VAUGHAN

CITY OF TORONTO

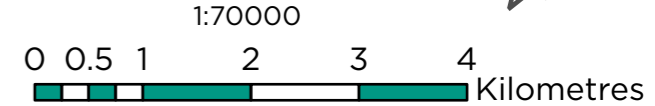
CITY OF MISSISSAUGA

Functional Street Classification

- Heritage Heights Street Network
- Major Arterial (City)
- Major Arterial (Regional)
- Minor Arterial
- Collector
- Local

Base Map Features

- Railway
- Highway

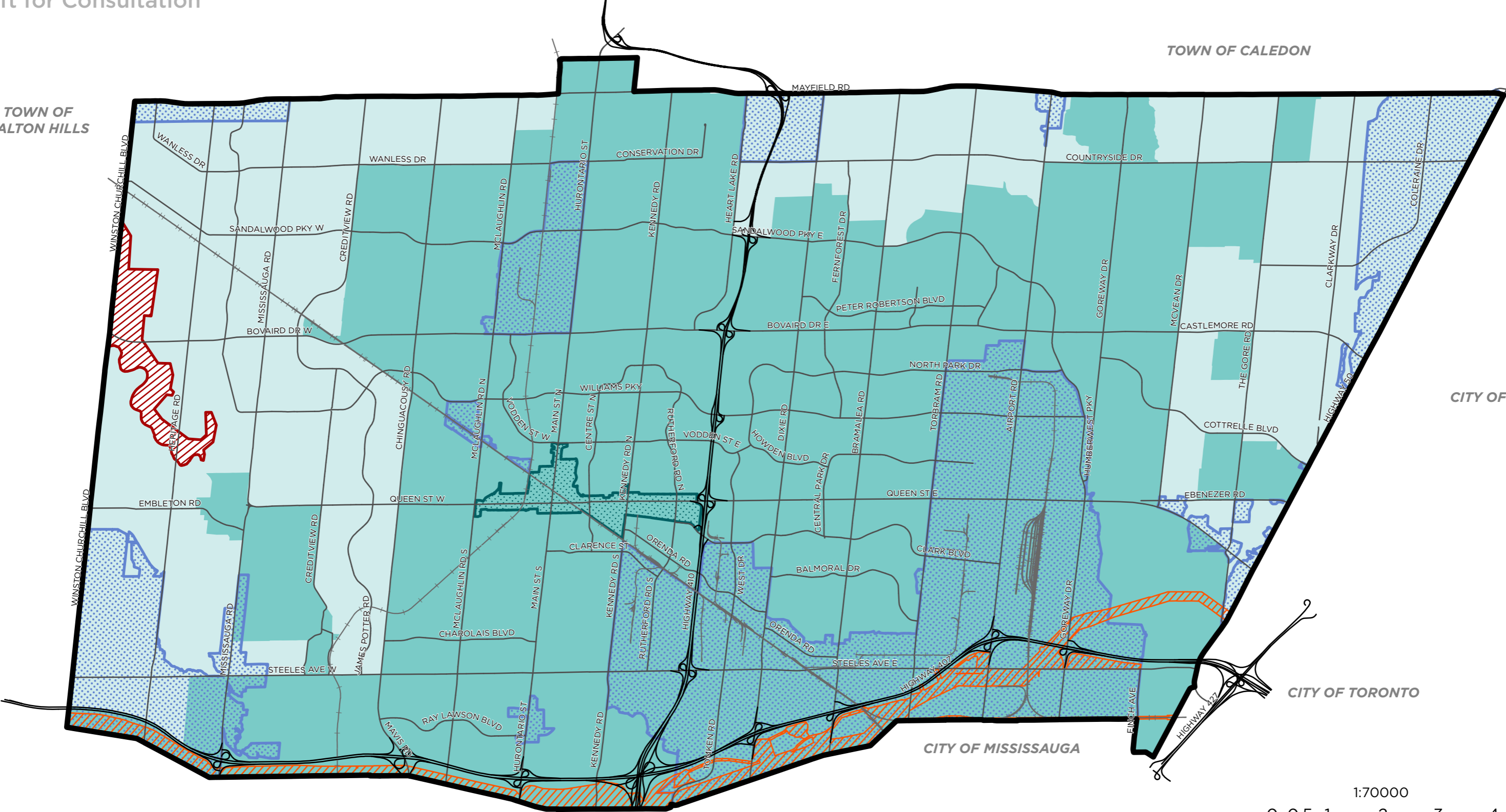


Date: April 2022
 Planning, Building and Economic Development
 Brampton Plan

This map forms part of the Official Plan of the City of Brampton and must be read in conjunction with the text, other schedules and secondary plans. The boundaries and alignments of designations and overlays on this schedule are approximate and are not intended to be scaled.

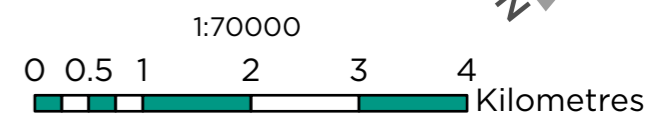
SCHEDULE 3C | STREETS NETWORK





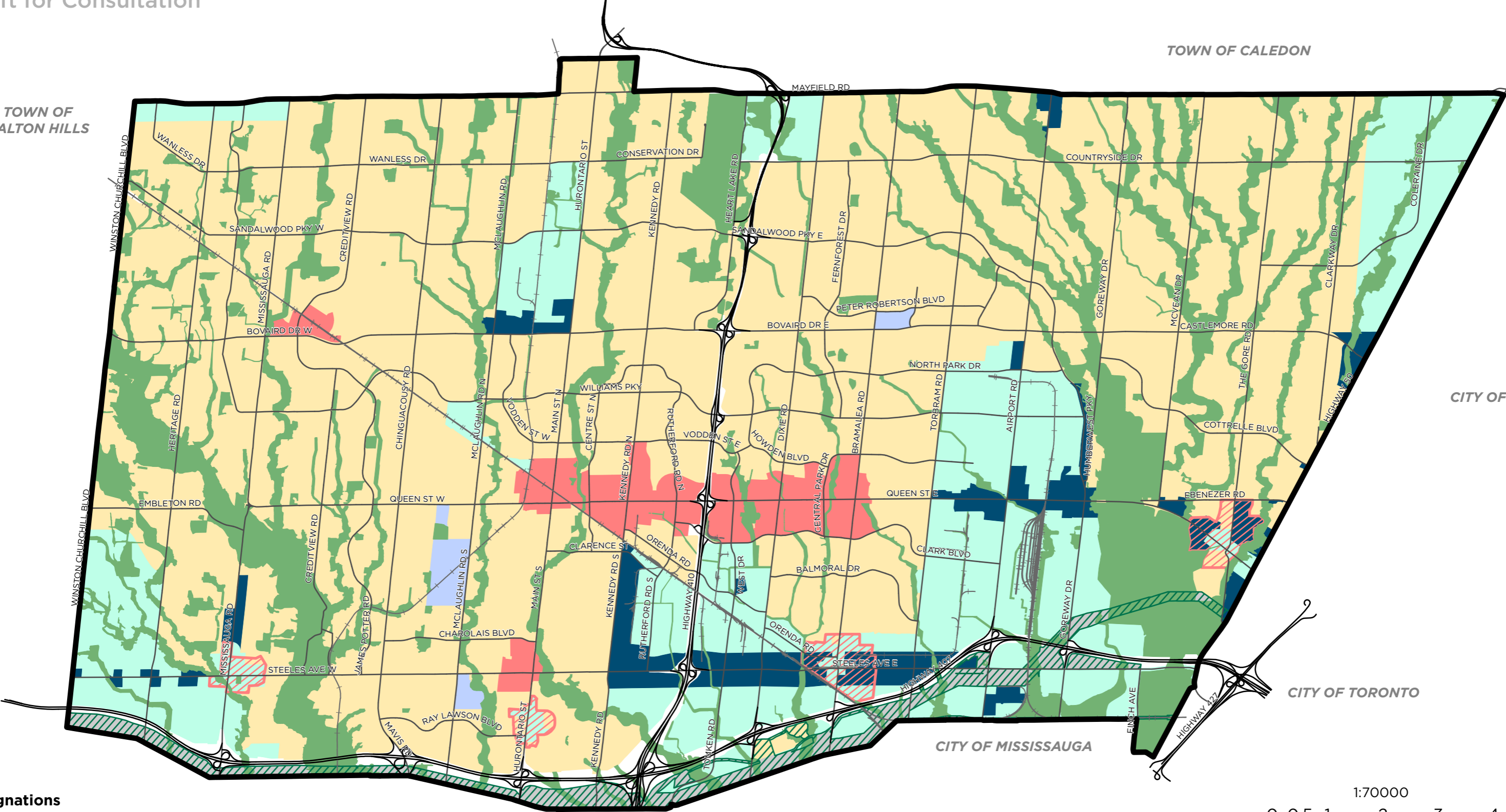
- Urban Growth Centre
- Built-Up Area
- Designated Greenfield Area
- Provincially Significant Employment Zones (PSEZ)
- Parkway Belt West Plan
- Greenbelt Plan

- Base Map Features**
- Railway
 - Highway
 - Major Streets



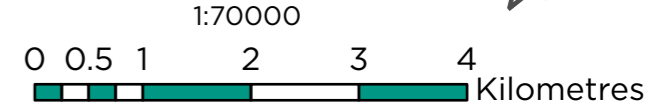
Date: April 2022
 Planning, Building and Economic Development
 Brampton Plan

This map forms part of the Official Plan of the City of Brampton and must be read in conjunction with the text, other schedules and secondary plans. The boundaries and alignments of designations and overlays on this schedule are approximate and are not intended to be scaled.



- Designations**
- Mixed-Use Districts
 - Neighbourhoods
 - Employment
 - Mixed-Use Employment
 - Major Institutional
 - Natural Heritage System
 - Parkway Belt West

- Base Map Features**
- Railway
 - Highway
 - Major Streets



Date: April 2022
 Planning, Building and Economic Development
 Brampton Plan

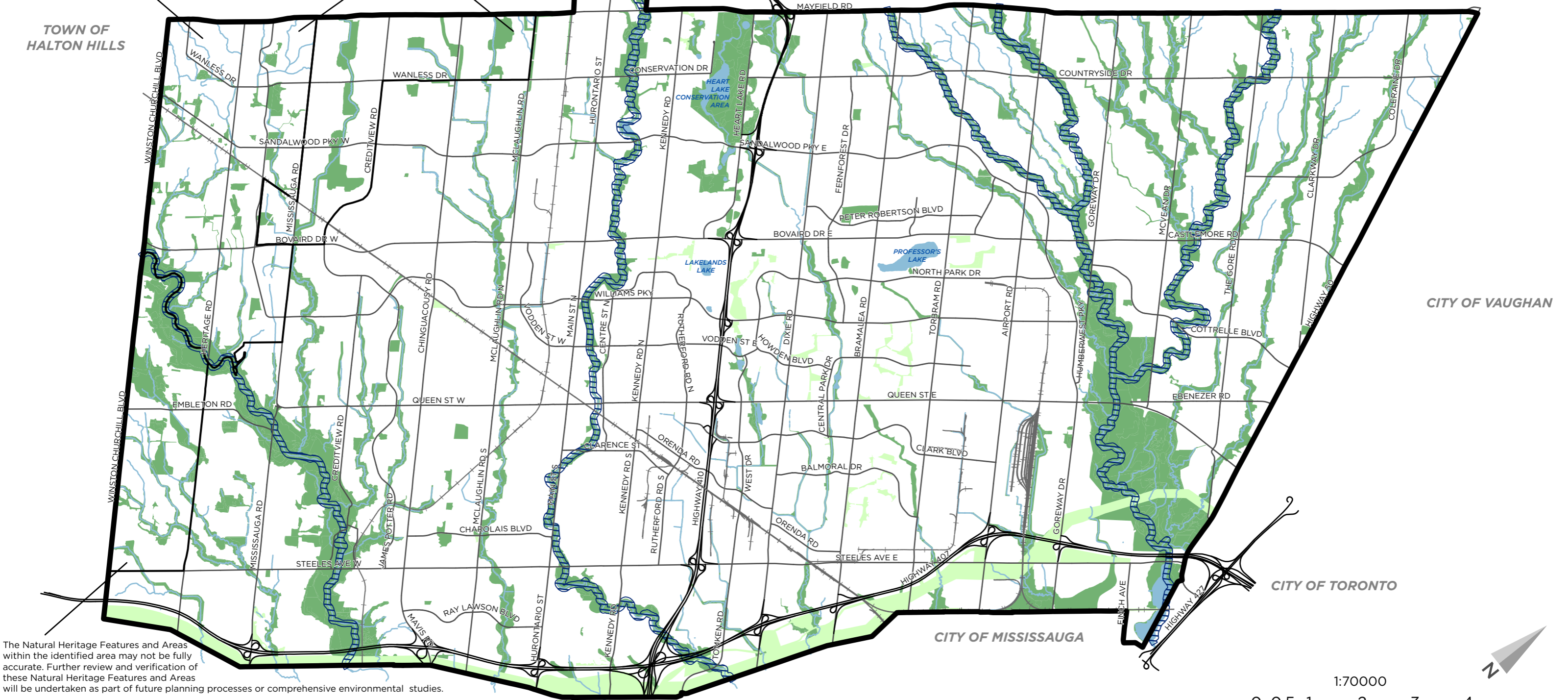
This map forms part of the Official Plan of the City of Brampton and must be read in conjunction with the text, other schedules and secondary plans. The boundaries and alignments of designations and overlays on this schedule are approximate and are not intended to be scaled.

Draft for Consultation

The Natural Heritage Features and Areas within the identified area may not be fully accurate. Further review and verification of these Natural Heritage Features and Areas will be undertaken as part of future planning processes or comprehensive environmental studies.

Subject to further refinement based on mapping in Environmental Implementation Reports and Subwatershed Studies.

Mapping of natural heritage features subject to further refinement based on mapping contained in Environmental Implementation Reports and Subwatershed Studies, notably within the Heritage Heights and Mount Pleasant Secondary Plan Areas.



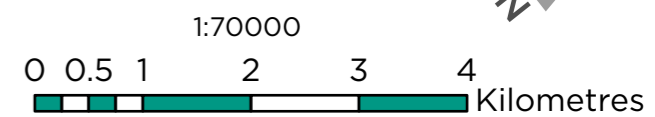
The Natural Heritage Features and Areas within the identified area may not be fully accurate. Further review and verification of these Natural Heritage Features and Areas will be undertaken as part of future planning processes or comprehensive environmental studies.

- Natural Heritage System
- Linkages and Enhancement Areas
- Urban River Valley
- Water Resources System

— Watercourses

Base Map Features

- Railway
- Highway
- Major Streets



Date: April 2022
 Planning, Building and Economic Development
 Brampton Plan

This map forms part of the Official Plan of the City of Brampton and must be read in conjunction with the text, other schedules and secondary plans. The boundaries and alignments of designations and overlays on this schedule are approximate and are not intended to be scaled.

Draft for Consultation

The Natural Heritage Features and Areas within the identified area may not be fully accurate. Further review and verification of these Natural Heritage Features and Areas will be undertaken as part of future planning processes or comprehensive environmental studies.

Subject to further refinement based on mapping in Environmental Implementation Reports and Subwatershed Studies.

Mapping of natural heritage features subject to further refinement based on mapping contained in Environmental Implementation Reports and Subwatershed Studies, notably within the Heritage Heights and Mount Pleasant Secondary Plan Areas.

TOWN OF CALEDON

TOWN OF HALTON HILLS

CITY OF VAUGHAN

CITY OF TORONTO

CITY OF MISSISSAUGA

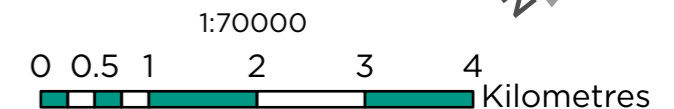
The Natural Heritage Features and Areas within the identified area may not be fully accurate. Further review and verification of these Natural Heritage Features and Areas will be undertaken as part of future planning processes or comprehensive environmental studies.

- Valleyland and Watercourse Corridor
- Woodland
- Provincially Significant Wetland
- Unevaluated Wetland
- Areas of Natural and Scientific Interest - Earth Science
- Areas of Natural and Scientific Interest - Life Science
- Environmentally Sensitive/Significant Area
- Greenbelt Plan (Protected Countryside Area)

- Water Resources System
- Watercourses

Base Map Features

- Railway
- Highway
- Major Streets

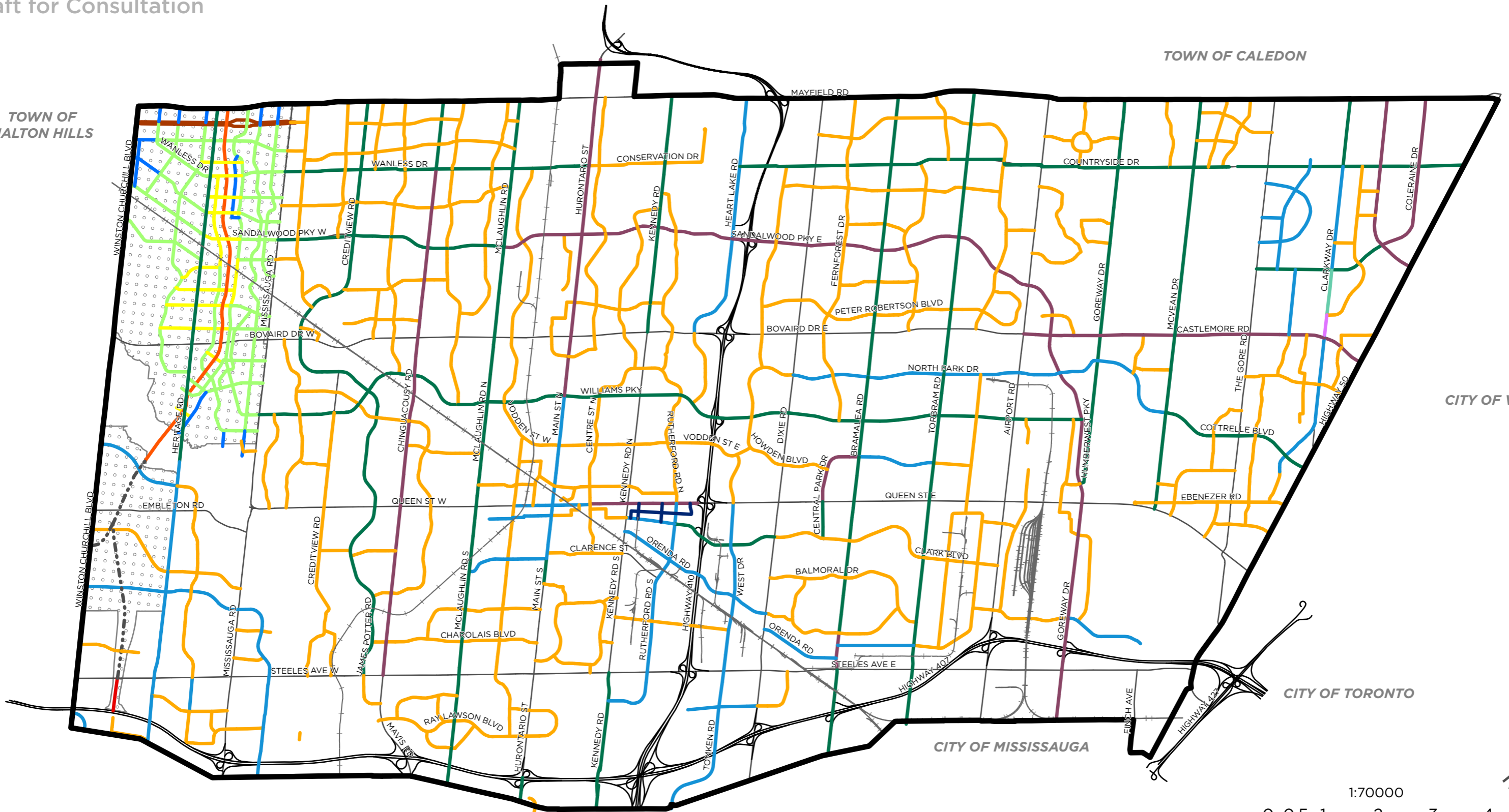


Date: April 2022
Planning, Building and Economic Development
Brampton Plan

This map forms part of the Official Plan of the City of Brampton and must be read in conjunction with the text, other schedules and secondary plans. The boundaries and alignments of designations and overlays on this schedule are approximate and are not intended to be scaled.

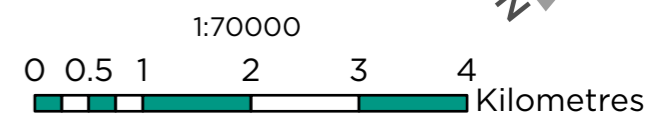
SCHEDULE 7 | NATURAL HERITAGE FEATURES





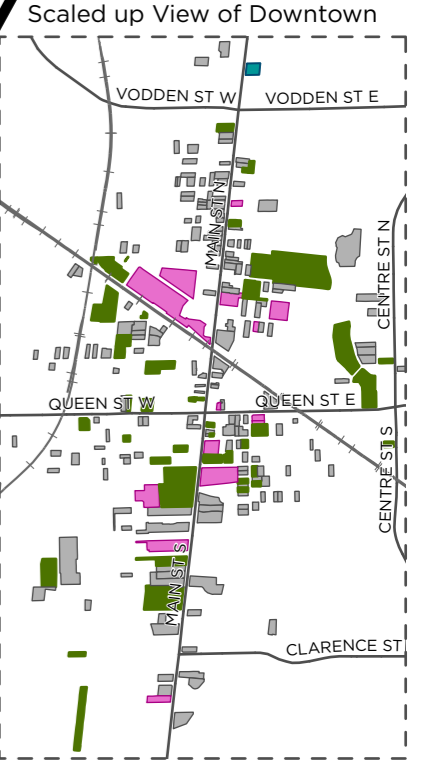
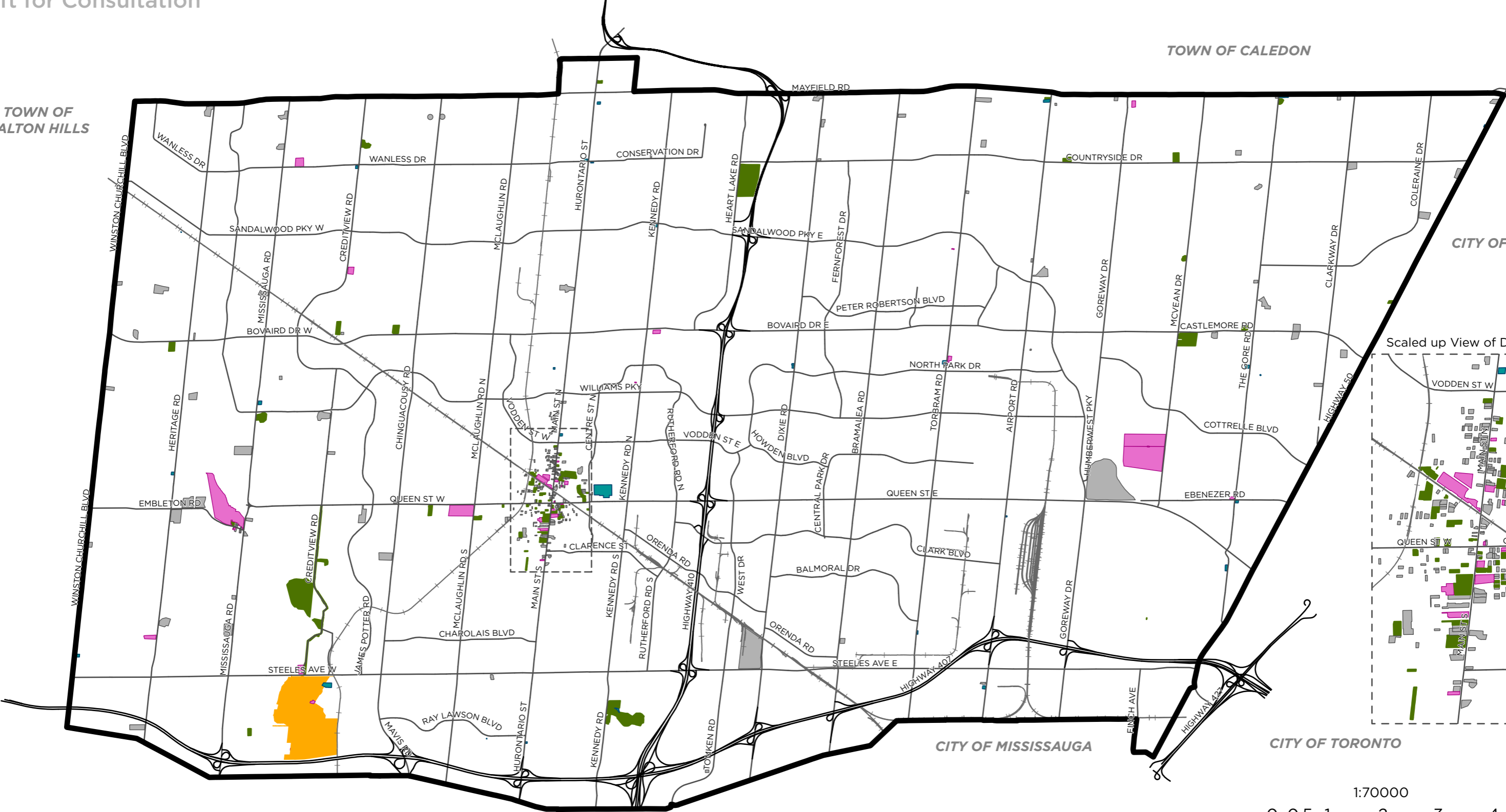
- 20 Metres
- 20-25 Metres
- 23-26 Metres
- 25-30 Metres
- 26-30 Metres
- 30 Metres
- 31.5 Metres
- 30-35 Metres
- 35-65 Metres
- 36 Metres
- 40-100 Metres
- 40-45 Metres
- 50-100 Metres
- 95-115 Metres
- Corridor Protection Area

- Base Map Features**
- Railway
 - Highway
 - Regional Roads



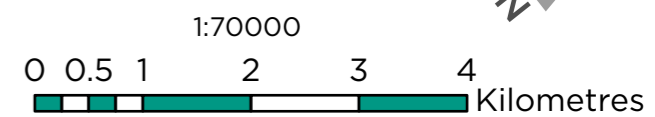
Date: April 2022
Planning, Building and Economic Development
Brampton Plan

This map forms part of the Official Plan of the City of Brampton and must be read in conjunction with the text, other schedules and secondary plans. The boundaries and alignments of designations and overlays on this schedule are approximate and are not intended to be scaled.



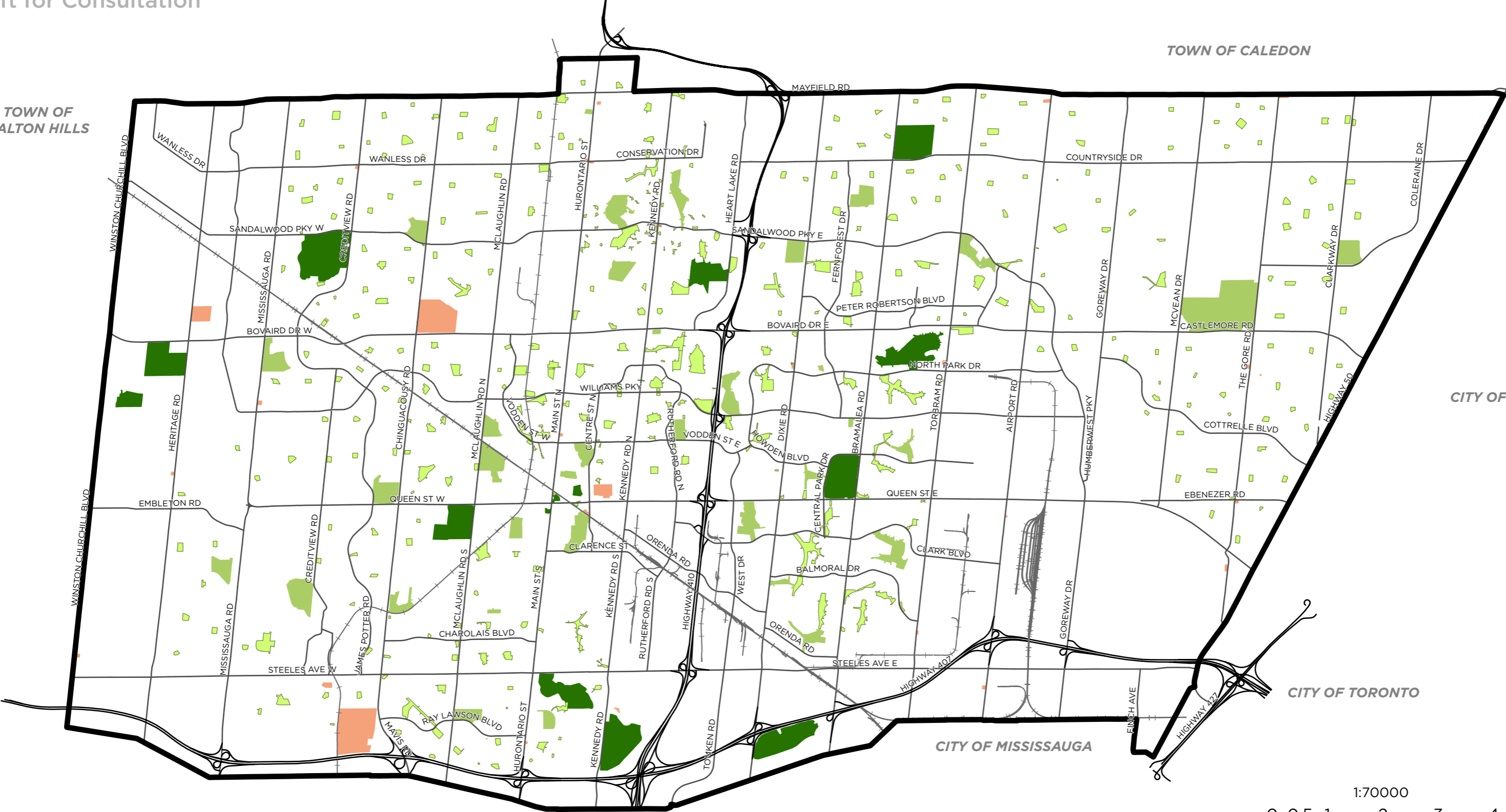
- Class A Heritage Resources
- Class B Heritage Resources
- Heritage Cemetery
- Designated Heritage Resources Under Part IV of the Ontario Heritage Act
- Designated Heritage Resources Under Part V of the Ontario Heritage Act
- City Boundary

- Base Map Features**
- Railway
 - Highway
 - Major Streets



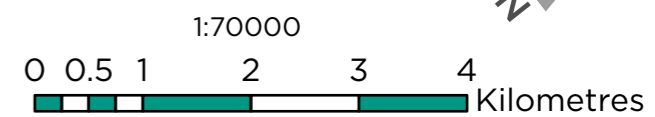
Date: April 2022
 Planning, Building and Economic Development
 Brampton Plan

This map forms part of the Official Plan of the City of Brampton and must be read in conjunction with the text, other schedules and secondary plans. The boundaries and alignments of designations and overlays on this schedule are approximate and are not intended to be scaled.



- City Park
- Community Park
- Neighbourhood Park
- Cemetery

- Base Map Features**
- Railway
 - Highway
 - Major Streets



Date: April 2022
 Planning, Building and Economic Development
 Brampton Plan

This map forms part of the Official Plan of the City of Brampton and must be read in conjunction with the text, other schedules and secondary plans. The boundaries and alignments of designations and overlays on this schedule are approximate and are not intended to be scaled.

TOWN OF CALEDON

TOWN OF HALTON HILLS

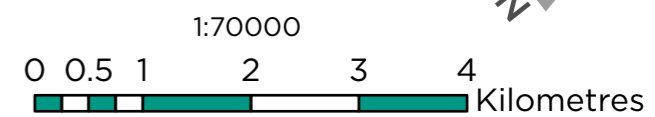
CITY OF VAUGHAN

CITY OF TORONTO

CITY OF MISSISSAUGA

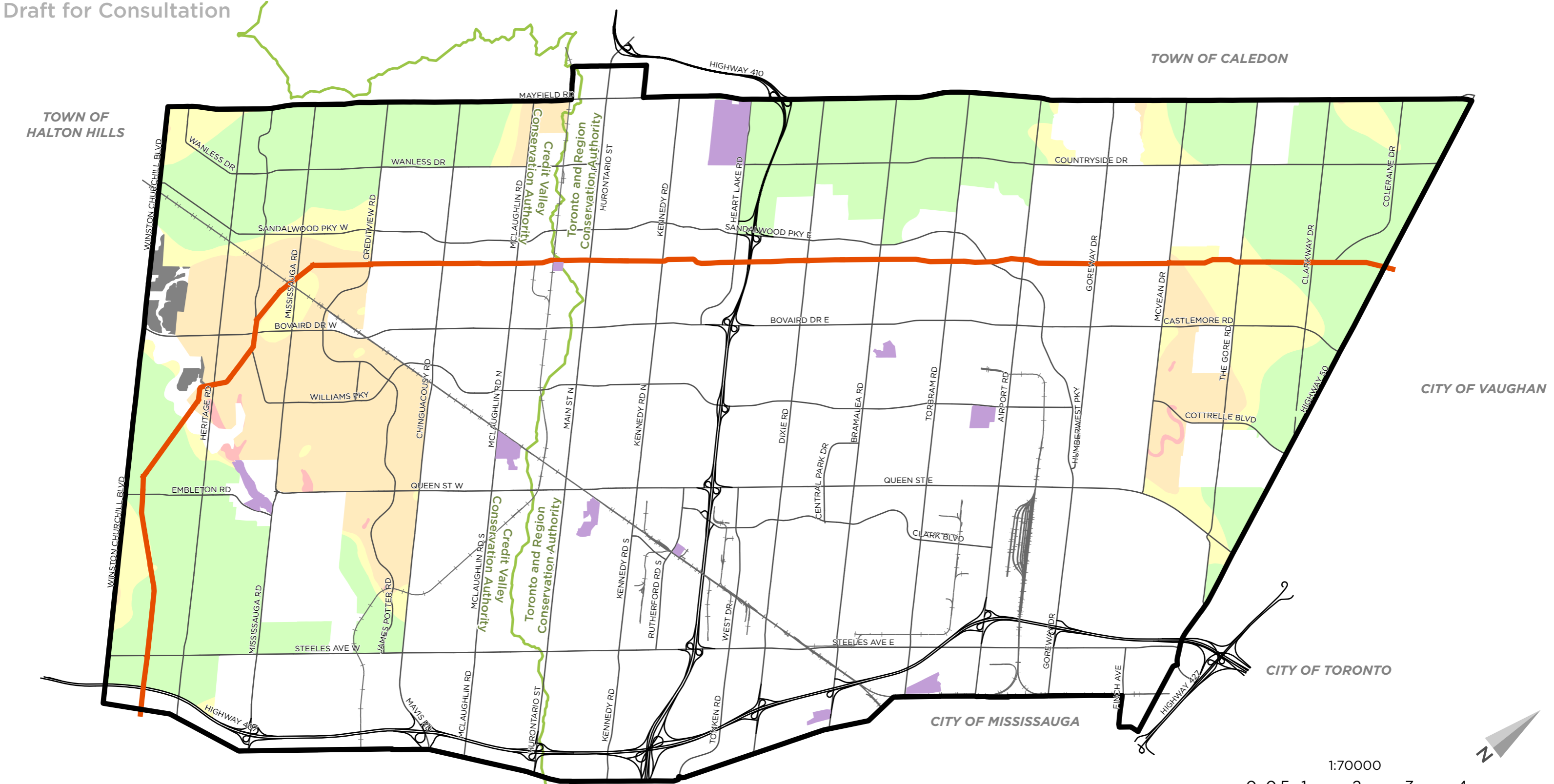
- Densification Districts
- Potential Net Zero Districts

- Base Map Features**
- Railway
 - Highway
 - Major Streets



Date: April 2022
 Planning, Building and Economic Development
 Brampton Plan

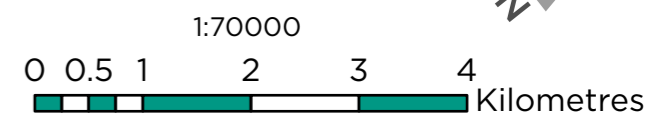
This map forms part of the Official Plan of the City of Brampton and must be read in conjunction with the text, other schedules and secondary plans. The boundaries and alignments of designations and overlays on this schedule are approximate and are not intended to be scaled.



- TransCanada Pipeline
- High Potential Mineral Aggregate Resource Area (HPMARA)
- Conservation Authority Boundaries
- Waste Management Sites

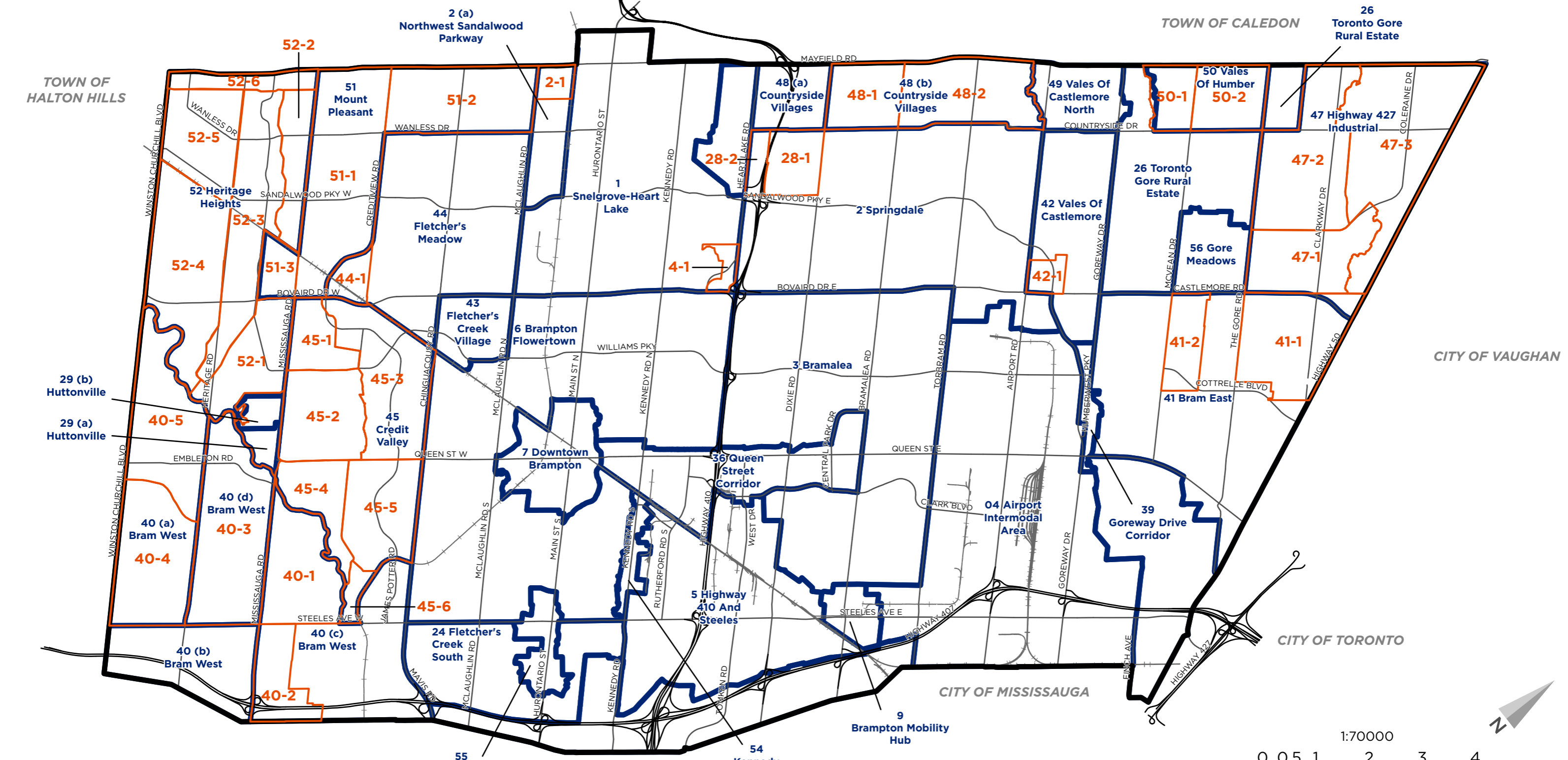
- Bedrock Aggregate Resource Deposits
Overburden Thickness within Designated Greenfield Area
- Less than 1 m
 - 1 m to 8 m
 - 8 m to 15 m
 - Greater than 15 m

- Base Map Features**
- Railway
 - Highway
 - Arterial Roads



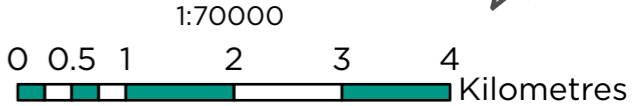
Date: April 2022
Planning, Building and Economic Development
Brampton Plan

This map forms part of the Official Plan of the City of Brampton and must be read in conjunction with the text, other schedules and secondary plans. The boundaries and alignments of designations and overlays on this schedule are approximate and are not intended to be scaled.



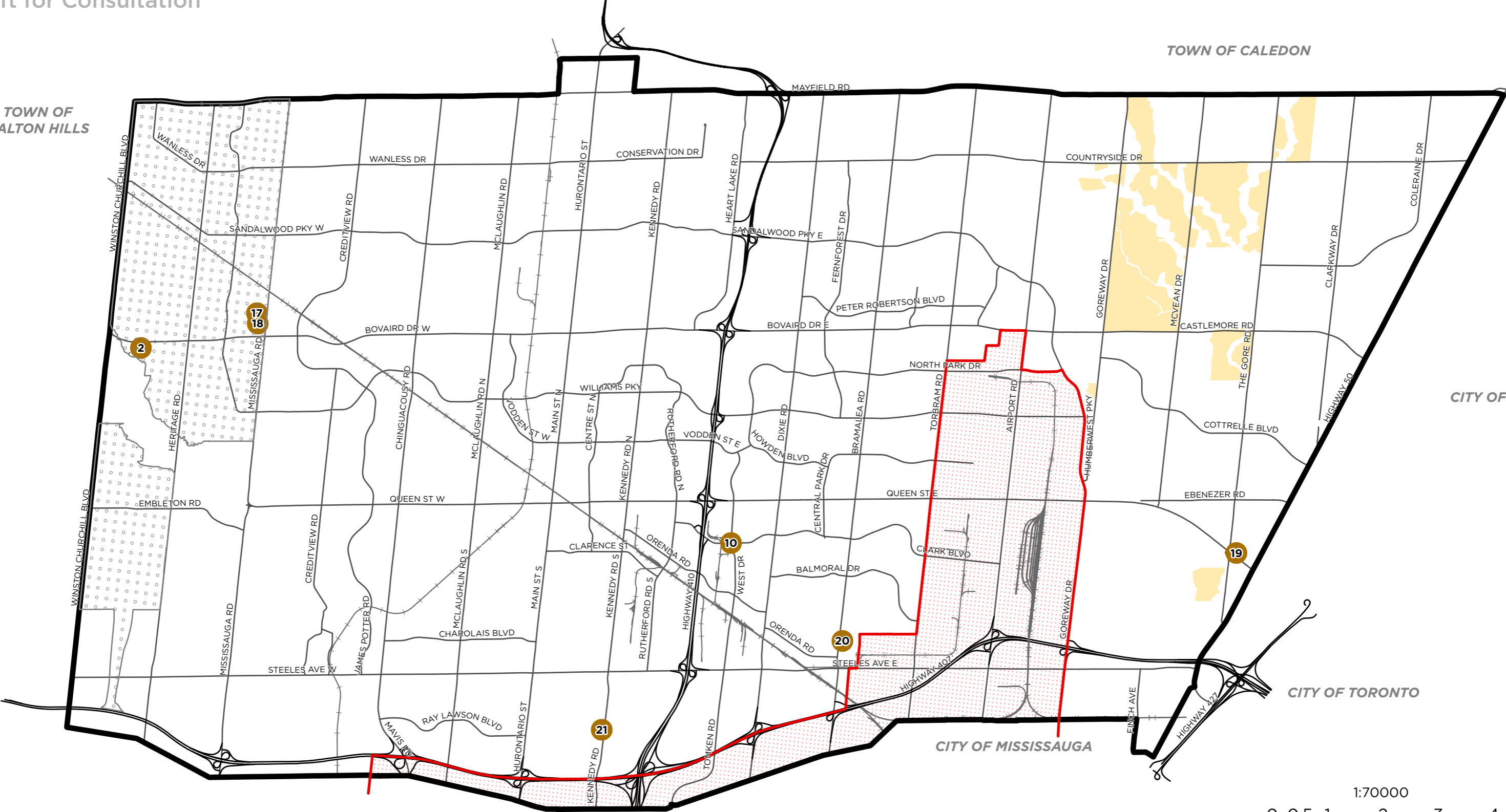
- Secondary Plan
- Precinct Plan Area





- Base Map Features**
- Railway
 - Highway
 - Arterial Roads


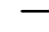



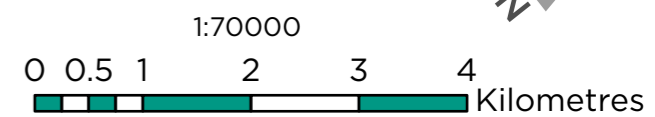
Date: April 2022
 Planning, Building and Economic Development
 Brampton Plan

This map forms part of the Official Plan of the City of Brampton and must be read in conjunction with the text, other schedules and secondary plans. The boundaries and alignments of designations and overlays on this schedule are approximate and are not intended to be scaled.



-  Lester B. Pearson International Airport (LBPIA) Operating Area
-  Established Rural Estate Residential Area
-  Special Land Use Policy Areas (Subject to Further Refinement)
-  Corridor Protection Area

- Base Map Features**
-  Railway
 -  Highway
 -  Major Streets



Date: April 2022
 Planning, Building and Economic Development
 Brampton Plan

This map forms part of the Official Plan of the City of Brampton and must be read in conjunction with the text, other schedules and secondary plans. The boundaries and alignments of designations and overlays on this schedule are approximate and are not intended to be scaled.